

# 高無氧化烤箱

**C SUN**

High Performance Inert Gas Oven

**QHMO-2**



## Features :

- Low Oxidation Content 50 PPM.
- Low Gas Consumption.
- Fast Run-Up Time.
- Exclusive C SUN Cooled Chamber Design.
- Standard Safety Door Switch.

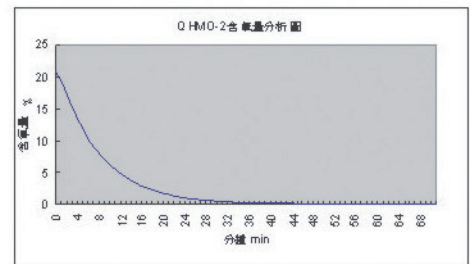
**Leading in Thermal and UV Light Processing Equipment**

Model	QHMO-2	
Interior	W 600×D 600×H 600 mm	
Exterior	W 1485×D 1130×H 1200 mm	
Power Source.	220/380V/415V 3φ 50/60HZ 9KVA ; 220/380V/415V 3φ 50/60HZ 15KVA	
Heater Capacity	8KW / 13KW	
Temp. Range	+60°C~Max. 300°C / +60°C~Max. 500°C	
Temp. Controller	Shinko PC-635 Programmable	
Temp. Control	PID With SSR Power Control Device	
Control Accuracy	±0.5°C	
Cool Down Time	40min(60°C or Less, Empty Chamber)	
Temp Uniformity	300°C ±1.5%。A500°C ±2%	
Run-Up Time	45min.( 300°C Empty Chamber)/ 70min.( 500°C Empty Chamber)	
Air Circulation	Horizontal air Flow	
Inlet Gas	N <sub>2</sub> or CO <sub>2</sub> , 80SCFH(Flow Meter 3.5 kgf/cm <sup>2</sup> ,20°C)	
Oxygen	Oxygen Content 0.5%	
Inert Gas Consumption	[ Recommended ] Purge : 110 SCFH, Run : Min 70 SCFH	
Materials	<ul style="list-style-type: none"> <li>• Interior:SUS304 Stainless Steel</li> <li>• Exterior:SS41 Construction Steel with Baked Enamel</li> </ul>	
Work Tray	2 Units, Perforated SUS 304 Stainless Steel	
Safety Device	<ul style="list-style-type: none"> <li>• Leakage Circuit Breaker</li> <li>• Overload Protection for Heater &amp; Motor</li> <li>• Over Temp. Protection</li> <li>• Three Phase Reversal protection Safety Door Switch</li> </ul>	
Option	<ul style="list-style-type: none"> <li>• Temp. Recorder Yokogawa μR-1000/1 Pen</li> <li>• Additional Work Tray</li> <li>• Stand</li> <li>• SUS Tubular Sheated Heater</li> <li>• Ultra-High Temp 500°C type</li> </ul>	

Due to C SUN continuing efforts to improve their systems, these specifications are subject to change without notice.  
因應長期研發需要，本公司保有規格修改之權利，恕不另行通知

## OXYGENATION PROFILE

MINUTE	OXYGENATION	MINUTE	OXYGENATION	MINUTE	OXYGENATION	MINUTE	OXYGENATION
0	20.80%	18	2.26%	36	0.226%	54	220ppm
1	19.40%	19	1.99%	37	0.198%	55	193ppm
2	17.40%	20	1.74%	38	0.174%	56	174ppm
3	15.30%	21	1.53%	39	0.150%	57	159ppm
4	13.50%	22	1.33%	40	0.133%	58	146ppm
5	11.90%	23	1.19%	41	0.118%	59	133ppm
6	10.40%	24	1.03%	42	0.103%	60	122ppm
7	9.20%	25	0.92%	43	0.091%	61	111ppm
8	8.12%	26	0.812%	44	0.793ppm	62	101ppm
9	7.15%	27	0.711%	45	700ppm	63	93ppm
10	6.30%	28	0.619%	46	619ppm	64	85.8ppm
11	5.53%	29	0.553%	47	546ppm	65	78.5ppm
12	4.88%	30	0.483%	48	480ppm	66	72.2ppm
13	4.30%	31	0.429%	49	422ppm	67	66.3ppm
14	3.78%	32	0.377%	50	370ppm	68	60.9ppm
15	3.33%	33	0.332%	51	324ppm	69	56.0ppm
16	2.91%	34	0.293%	52	285ppm	70	51.8ppm
17	2.57%	35	0.258%	53	251ppm	71	48.6ppm



條件：

1. N<sub>2</sub>入氣壓力：3.5 Kg/cm<sup>2</sup>
2. N<sub>2</sub>流量：110 SCFH
3. 爐內壓力：160 mmAq

\*此表僅供參考

Due to C SUN continuing efforts to improve their systems, these specifications are subject to change without notice.  
受長期研發需要，本公司保有規格修改之權利，恕不另行通知

DM201606-0000

業務洽詢專線： +86-139-22532580 (華南) +86-138-62666327 (華東) +886-922-225015 (臺灣)

andyhuang@csun.com.tw

### 台北

新北市林口區工二工業區  
工八路2-1號  
TEL:886-2-26017706  
FAX:886-2-26018854

### 台中

台中市南屯區  
精科二路11號  
TEL:886-4-23591651  
FAX:886-4-23592678

### 廣州

廣州市花都區獅嶺鎮  
利和路6號  
TEL:86-20-86846341-3  
FAX:86-20-86910139

### 東莞

東莞市大朗鎮長塘第三工業區78號  
松湖雲谷雲松樓1樓  
TEL:86-769-85331146  
FAX:86-769-85331145

### 昆山

江蘇省昆山市高新區(玉山鎮)  
恒盛路1369號  
TEL:86-512-57780230  
FAX:86-512-57780229